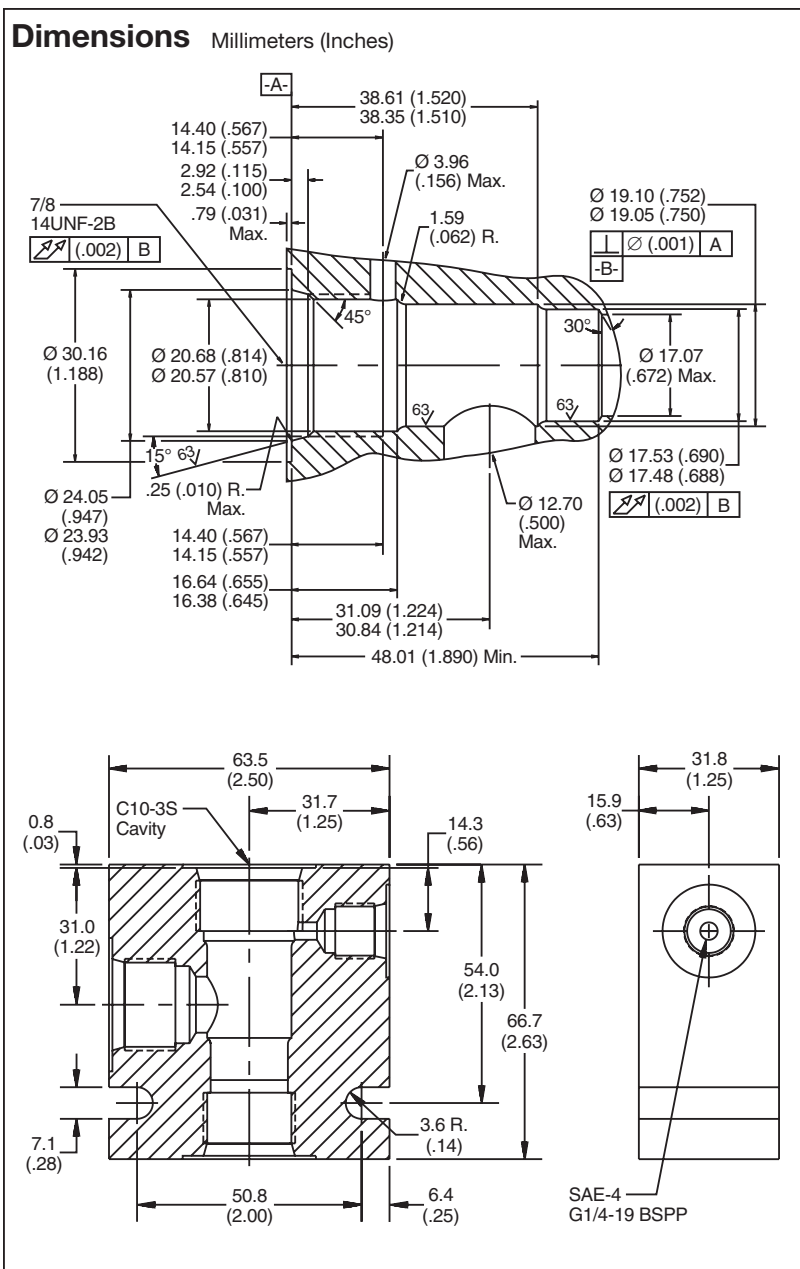
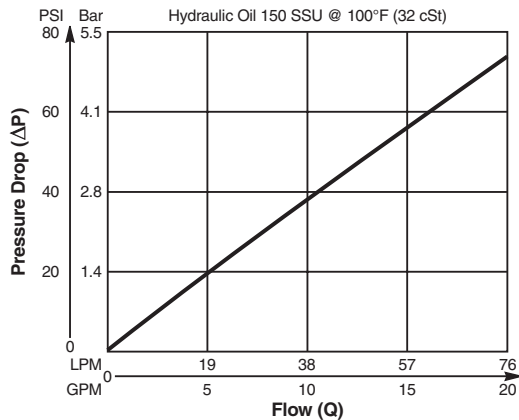


**Valve/Cavity Compatibility**

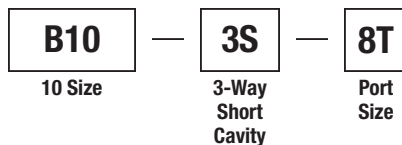
For additional information see Technical Tips on pages BC2-BC3.

		VALVE			
		Parker	Waterman	FPS	CEC
CAVITY	Parker				
	Waterman				
	FPS			X	X
	CEC			X	X

**Performance Curve**  
**Pressure Drop vs. Flow**



**Ordering Information**



Code	Port Size
8T	SAE - 8/Steel (5000PSI)

Weight: .77 kg (1.7 lbs.)

**\*Please be advised that this is a non-core line body.**  
**Additional lead-time and/or pricing requirements may exist when ordering.**

- CV Check Valves
- SH Shuttle Valves
- LM Load/Motor Controls
- FC Flow Controls
- PC Pressure Controls
- LE Logic Elements
- DC Directional Controls
- SV Solenoid Valves
- PV Proportional Valves
- CE Coils & Electronics
- BC Bodies & Cavities
- TD Technical Data